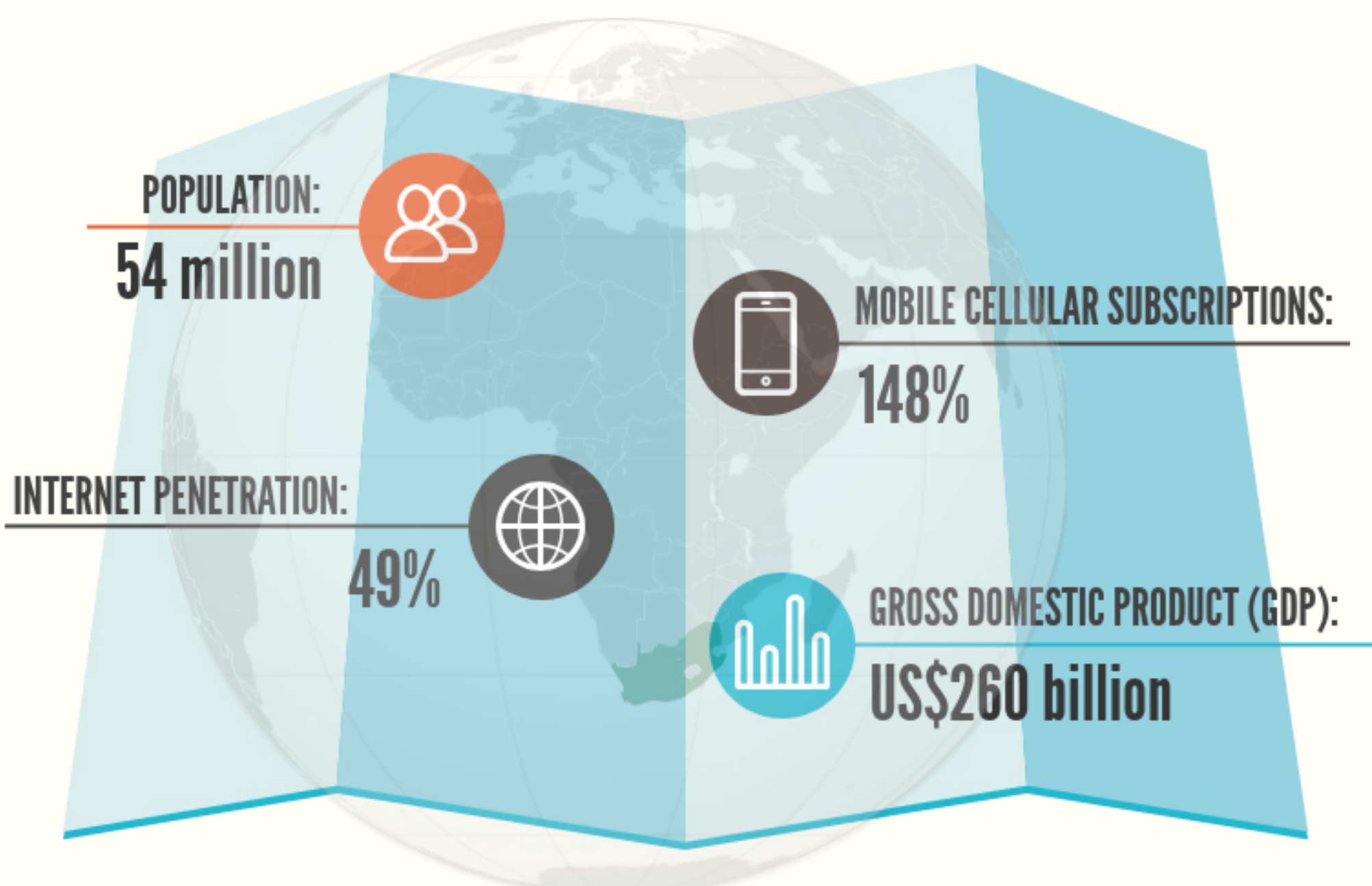


5 MIN GUIDE: SOUTH AFRICA 2014 DEVELOPMENT INDICATORS



1/4 adults remains unemployed

Accomplished mediator in conflict-resolution in Africa



SUCCESS STORIES



Infant mortality down from 58 to 34 deaths / 1 000 live births since 2002 .



Serious crimes reported reduced from 5K to 3.5K / 100K since 2002



Households in low living standards decreased from 40% to 11% since 2000



86% households accessing acceptable water infrastructure



2nd best out of 100 countries at access to budget information and participation



84% of adults are literate

CHALLENGES

RISING GOVERNMENT DEBT

INSUFFICIENT GROSS DOMESTIC PRODUCT SPENT ON RESEARCH & DEVELOPMENT

WEAKER GLOBAL COMPETITIVENESS

INCREASING SERVICE DELIVERY PROTESTS

DECREASING PUBLIC OPINION OF SERVICE DELIVERY BY GOVERNMENT

ETHNIC DIVERSITY



BLACK
80%

COLOURED
9%

INDIAN
2%

WHITE
8%

FOR MORE INFO, VISIT:
www.thepresidency-dpme.gov.za